

delta

3000 DC

delta



www.ilapak.com



PACKAGING MACHINERY

TECHNICAL SPECIFICATIONS

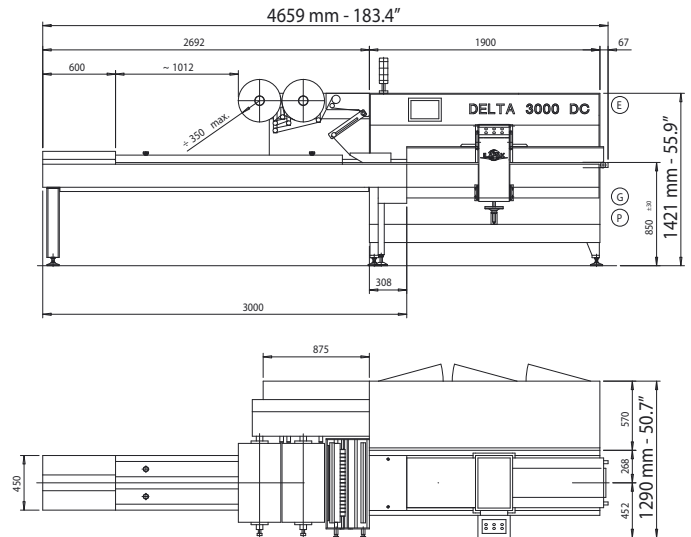
Machine speed	Up to 150 cycles per minute (single jaw) Up to 300 cycles per minute (twin jaws) Production output depends on film sealability and product characteristics.
Product dimensions	
LENGTH	Up to 400 mm - 16" According to the head design.
WIDTH	140 mm - 5.5"
HEIGHT	Up to 60 mm - 2.4" According to the head design.
Film cut-off	Min 80 mm - 3.1" / Max 450 mm - 17.5" Depending on film and product characteristics.
Wrapping materials	Laminated, co-extruded and all sealable films
Film reel dimensions	
CORE Ø	76,2 mm - 3" standard 152,4 mm - 6" on request
OUTER Ø	350 mm - 13.8" standard. 400 mm - 15.7" on request (auto-splicer only)
WIDTH	500 mm - 19.7" standard 650 mm - 25.6" on request
Film reel max weight	Depending on film reel width, up to 75 kg
Electronic platform	Industrial PC + CAN BUS System For USA & Canada, in particular, Allen Bradley platform available.
Power requirement	From 220 to 480 V, 50/60 Hz, 7 kVA
Compressed air	6 bar, 200 l/min
Machine weight	1400 kg - 3100 lbs

MAIN STANDARD FEATURES

- _____ D-cam sealing head to optimize sealing cycle.
- _____ 4 AC motors to control infeed, rollers, jaws, film feed (additional motors with automatic feeders).
- _____ User friendly 10" colour VGA touch screen operator interface with intuitive icons.
- _____ 64 programs (additional memory on request).
- _____ Automatic product size change.
- _____ Integrated temperature control.
- _____ Film tensioning and power unwind system controlled by loadcell.
- _____ Electronic diagnostics on-board.
- _____ No product / No bag.
- _____ Misplaced product detection system.
- _____ Ports for peripheral units (printer, labelers, gas control, etc.).
- _____ Programming via AT compatible keyboard.
- _____ Right-hand.
- _____ Robust, hygienic, easy to clean design.

Please discuss your needs with our local representative to configure this machine to your product's specific requirements.

ILAPAK is ISO 9001:2000 certified.



All measurements not specified in inches are given in millimeters.

These specifications are not binding. We reserve the right to change them without prior notice.