

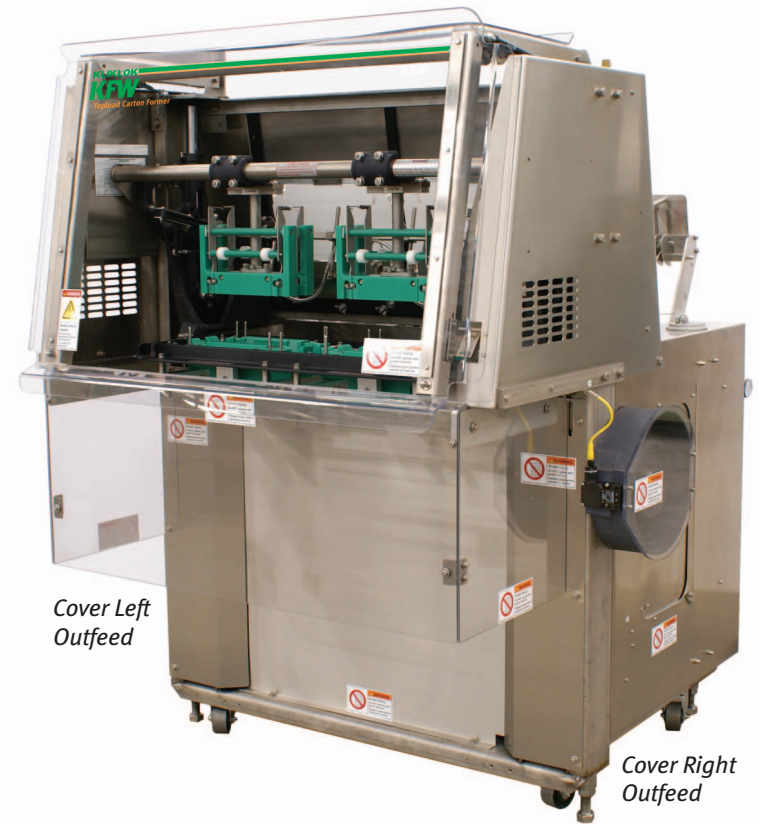
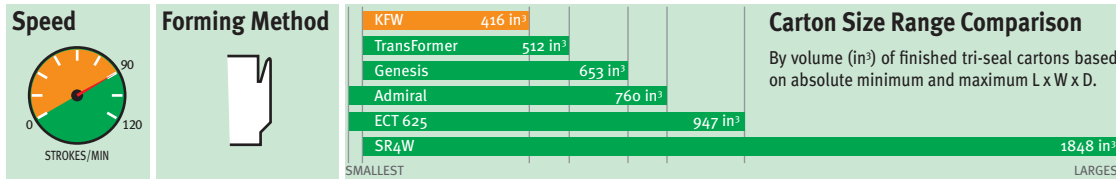
# KFW

## Topload Carton Former

### THE Most Widely-Used Topload Carton Forming System in the World

The KFW lock-style forming machine is a best-in-class machine. Along with the prestige of being the most widely used top-load carton forming system in the world, it outsells all other KW machines combined. The KFW former has evolved into one of the most rugged, versatile and highest-performing machines in the industry, capable of running special carton forming heads to accommodate unique carton styles.

The key to the KFW's success is its simplistic design, fast change over, and ease of maintenance. With almost 70 years of production experience, Kliklok-Woodman carton formers have a proven reputation for reliability in a wide variety of applications.



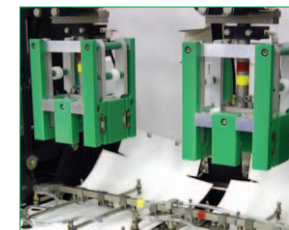
### Easy Operation

KW's industry-leading Insight® color graphic touch screen HMI is intuitive and self tutoring. Automatic programming eliminates operator error and ensures consistent performance regardless of shift or operator skill.



### Multiple Head Configurations

Single to quad head configurations, combined with the capability of running up to 90 strokes per minute, provides the industry's fastest carton output in the most demanding production environments.



### Composite Forming Heads

Lightweight, dimensionally accurate, long wearing and provide unusually quiet operation.



### Standard Stainless Steel

The KFW's construction makes it suitable for a broad range of production environments with legendary reliability and service life. The KFW is washdown rated to IP 54.



### Reliable Lock-Forming

KW's stripper lock style forming machine reliably forms and erects cartons without glue quickly and efficiently for great economy.

# KFW

## Topload Carton Former

### PERFORMANCE

**SPEED:** Variable from 35 to 90 strokes per minute\*

*Actual speed depends upon machine configuration and carton size and style. \*Ask KW about meeting higher speed requirements.*

### CARTON SIZE RANGE

	X	Y	L	W	D	F	G	H
MIN (mm)	6 3/4" 171	5 3/4" 146	5" 127	4" 102	7/8" 22	1/2" 13	2 7/8" 73	6 7/8" 175
MAX (mm)	15" 381	12" 308	13" 330	8" 203	4" 102	7/8" 22	6" 152	14" 356

*Note: A carton combining multiple maximum and/or minimum dimensions may not be compatible with the standard system.*

### OPERATING REQUIREMENTS

#### ELECTRICAL:

460 VAC ±5%, 3-Phase with earth ground (PE), 50/60 Hz standard  
230 VAC ±5%, 3-Phase with earth ground (PE), 50/60 Hz available  
380–420 VAC, 3-Phase Wye with Neutral and PE, 50/60 Hz available

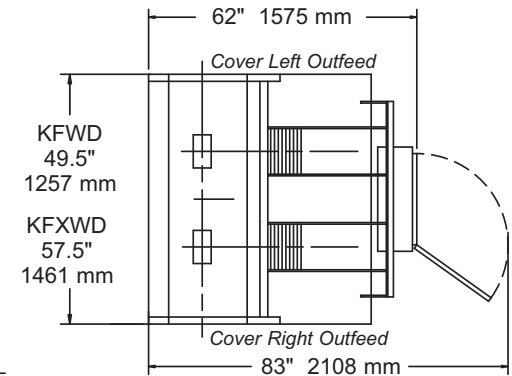
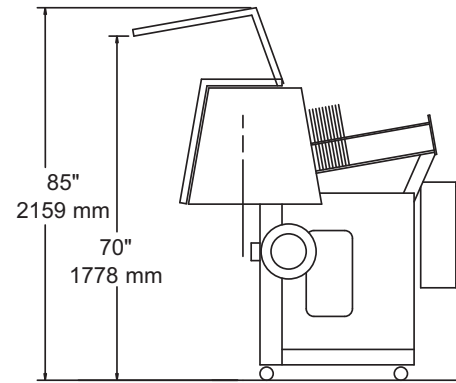
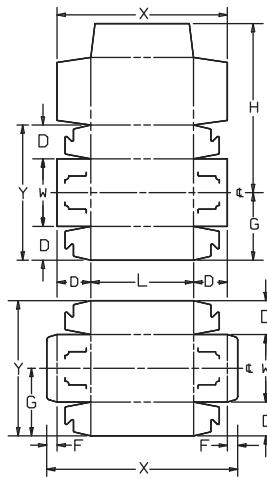
**NORMAL POWER CONSUMPTION:** 7kVA

**SERVICE REQUIRED:** 15 Amps @ 460 VAC

### CONSTRUCTION

Fully-welded stainless steel frame. Stainless steel shafts. Chains, pulleys and sprockets are nickel-plated. Polycarbonate overhead guard.

Approximate shipping weight: 1400 lb (630 kg)



### STANDARD FEATURES

- Multiple-head configuration
- Allen-Bradley Panelview HMI
- A-B PLC controls
- CAT3 safety
- Inclined carton magazine with agitators for positive stack advancement and weighted, locking stack pusher
- Variable frequency brake drive motor
- Vacuum pump
- Slip clutch for machine protection
- Electrical overload protection for motor and pump
- Two-button jog control
- Zone safety guarding and interlocks
- Handwheel with safety interlocks
- Leg kit for adjustable height
- Casters for portability and leveling screws
- Hopper capacity up to 1500 blanks of 0.016" (0.40 mm) board stock (24"/610 mm stack)
- "Off-the-shelf" control components
- IP54 stainless steel construction
- CE/ETL approved electricals

### OPTIONAL FEATURES

- Machine-driven flighted outfeed conveyor
- Extra-wide-frame model for large cartons (KFXWD)
- Higher speed ratings
- Timed vacuum system with remote foot switch
- PIAB vacuum source
- Detent plunger for jam protection
- Extended hopper capacity
- Low carton supply alarm
- Special electricals and voltages
- Air eject system
- Controlled carton supply system

# KW

## KLIKLOK • WOODMAN®

5224 Snapfinger Woods Drive  
Decatur, GA 30035 USA  
Tel +1-770-981-5200  
Fax +1-770-987-7160  
kwmarketing@kliklokwoodman.com  
www.kliklokwoodman.com

Western Drive, Hengrove Park Estate  
Whitchurch, Bristol, BS14 0AY, UK  
Tel +44-1275-836131  
Fax +44-1275-891754  
sales@kliklok-int.com  
www.kliklok-int.com