

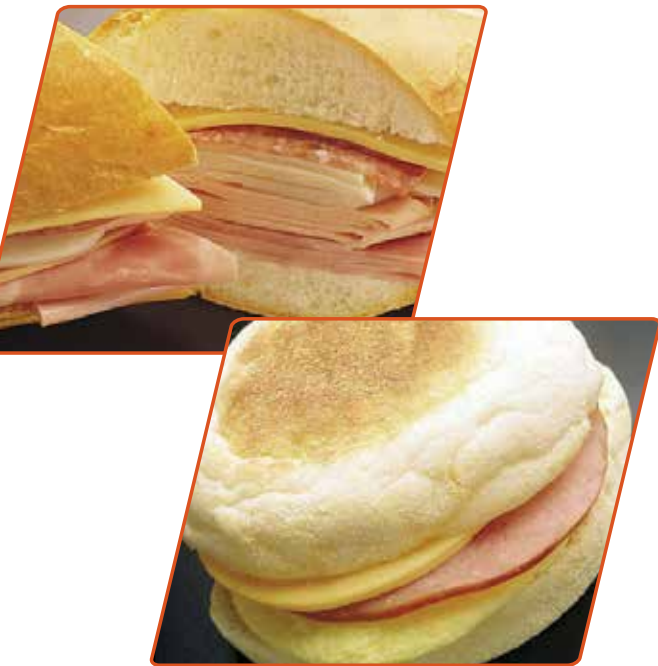
SNP-505 MODULAR SLICER

Grote's SNP-505 Slicer is ideal for single lane targeting applications, such as sandwich lines. It slices and applies product slices directly onto a moving target, such as a bun or tray, as it passes beneath.

Production rates are adjustable up to 120 strokes per minute. Product logs may be continuously loaded into the product holder while the machine is in operation.

With its cantilevered design, the SNP-505 is set directly over your production line. This design allows the slicing head to move to the desired height, and the frame can be reversed for left-hand or right-hand operation.

Most functions of the SNP-505 can be controlled with the user-friendly keypad. The keypad utilizes easily identifiable symbols to simplify the function selection process. Slicing speed, slicing mode, and blade lubrication can all be adjusted in an instant with the touch of a finger.

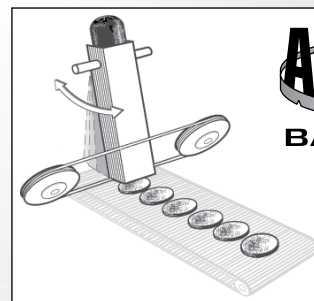


Slices and applies products to moving targets at rates up to 120 strokes per minute (single lane only).

Model 505

AccuBand®

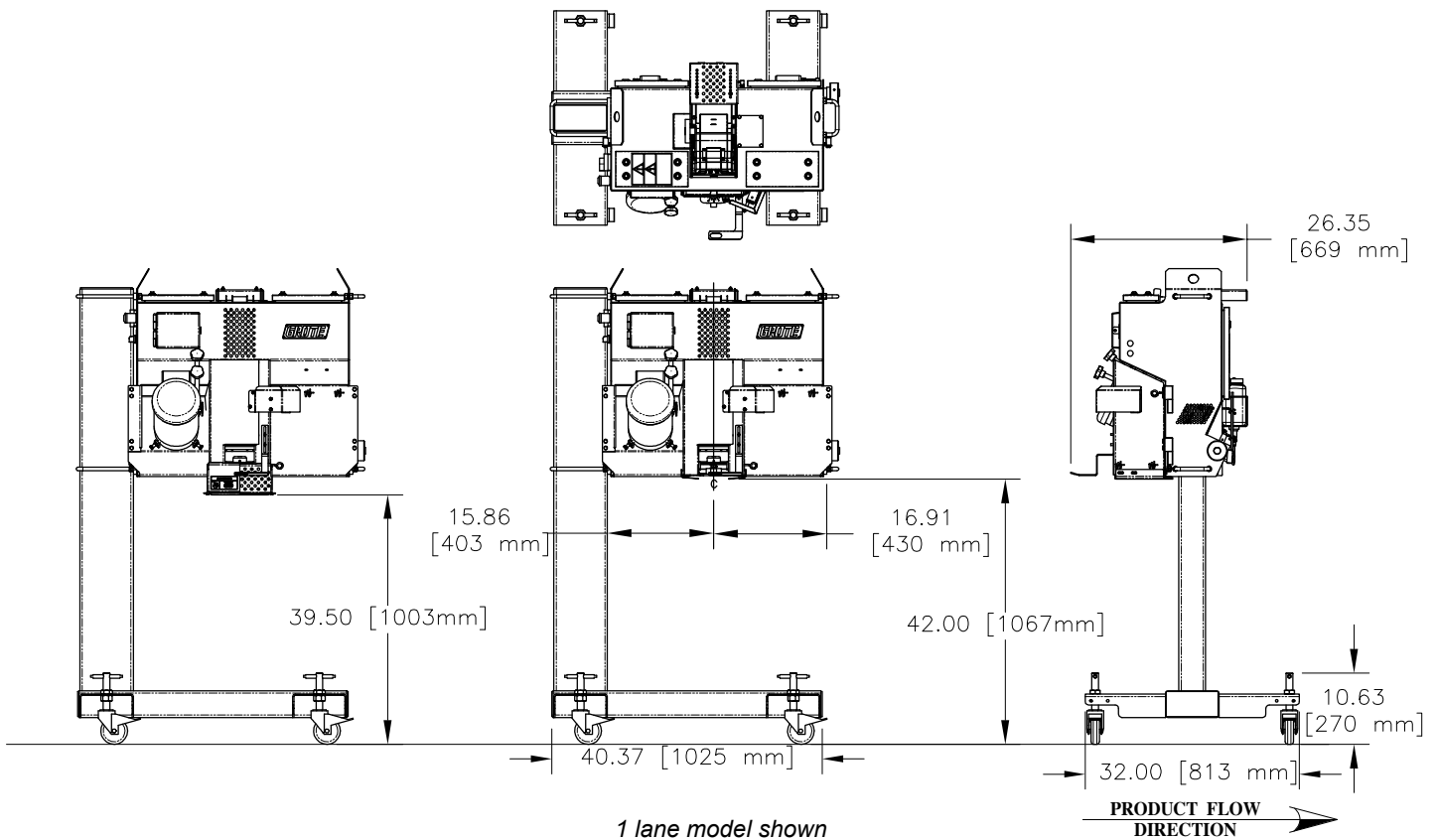
The SNP-505 utilizes Grote's patented AccuBand® cutting system for optimal slice quality and product yield. AccuBand® cuts with a .5" (12.7 mm) wide razor-sharp band blade running continuously between two pulleys. The blade cleanly and consistently cuts through entire product logs, including butt ends, to produce the highest yield of usable slices. Most boneless/non-frozen products may be sliced. These disposable blades eliminate the need for resharpening and simplify the cleanup process.



ACCUBAND®
BAND BLADES



Dimensional Drawings



ALL DIMENSIONS ARE APPROXIMATE
PRIMARY DIMENSIONS IN INCHES

Features

- Adjustable speed up to 120 strokes per minute
- Target and bulk slice modes
- 5" (127 mm) x 4.8" (121.92 mm) maximum product size
- 26" (660.4 mm) tall product holder
- Adjustable deposit height
- Variable slice thickness up to 3/8" (9.52 mm)
- Cantilevered frame with pedestal base
- Stainless steel construction
- All electric drive
- Emergency stop button
- Locking casters
- Blade motor: 1.5 H.P.
- Electrical requirements: 200 - 240 VAC/ 50/60 Hz/ 1 Phase
- Utilizes AccuBand® cutting system
- Continuous product loading during operation
- Gravity feed product method

Optional: shuttle conveyor for multi-slice shingling capability (consult factory for dimensional drawing - rates will vary per application)

Optional: targeting conveyor for multi-slice stacking capability (consult factory for dimensional drawing - rates will vary per application)

E 3.14

Corporate Office

1160 Gahanna Parkway
Columbus, OH 43230, USA
US Tel: 614-868-8414
US Toll Free: 888-534-7683
US Fax: 614-863-1647
e-mail: sales@grotecompany.com



To Feed Our Growing World - Together

www.grotecompany.com

European Sales & Service

Wrexham Technology Park
Wrexham, LL137YP, UK
Tel: +44 (0) 1978-362243
Fax: +44 (0) 1978-362255
e-mail: sales@intl.grotecompany.com