

CERTIWRAP 80

Wraparound Cartoner

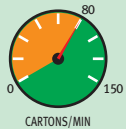
Medium-Speed Wraparound Cartoning

The Certiwrap 80 wraparound cartoner is designed to accommodate the sleeving of low-profile meal trays, tubs and pots either individually or in a variety of multi-pack configurations, such as single-row and double-row. Carton blanks are placed atop collated tubs or trays and folded around the product(s) to form the final package.

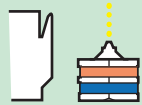
The Certiwrap 80 has been developed to handle a wide range of different products and carton styles and shapes, including full, economy, watch strap style, gusseted and other carton profiles to suit the changing packaging requirements of various food sectors. Thanks to its predominantly stainless steel construction, the Certiwrap 80 is suitable for use in the washdown conditions of the dairy and meat processing industries.



Speed



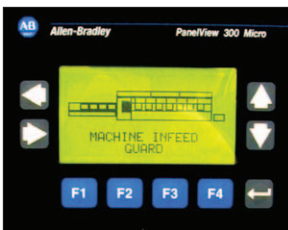
Closing Method



Size Range Comparison

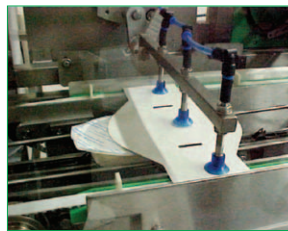
By volume (in³) of carton-wrapped products based on absolute minimum and maximum L x W x D.

2.8125 in ³	Certiwrap 80	531.25 in ³
2.8125 in ³	Certiwrap 150	531.25 in ³



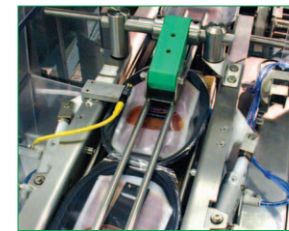
Easy Operation

KW's simple-to-use screen menu system with recipe-based programming eliminates operator error and ensures consistent performance regardless of shift or operator skill.



Proven Carton Feeding

KW's extremely reliable continuous-motion reciprocating feeder arm precisely places carton blanks in a 'vertical dropoff position' and onto the carton forwarding conveyor above the products.



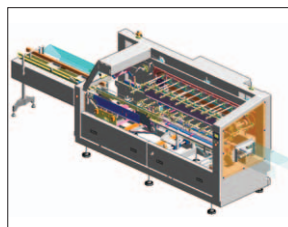
Pneumatic Gate Infeed

The Certiwrap 80 features a simple pneumatic gate infeed with a 4-foot product infeed conveyor, a well-proven, reliable infeed timing mechanism that provides maximum efficiency with minimum waste.



Centerline Confidence

Recipe-based programming and simple mechanical hand wheels with digital counters make three-dimensional size changes easy, quick and repeatable.



Cantilevered Design

The unique open design of the Certiwrap provides high visibility, easy accessibility and superior sanitary construction. Simply lifting the hinged safety doors provides total access for maintenance.

CERTIWRAP 80

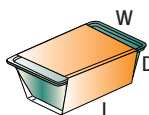
Wraparound Cartoner

PERFORMANCE

SPEED: Variable up to 80 cartons/min*

*Actual speed depends upon machine configuration and carton size and style. *Ask KW about meeting higher speed requirements.*

SIZE RANGE

CARTON	MIN.	MAX.
 Length	2 1/2" (63 mm)	10 5/8" (270 mm)
Width	8" (203 mm)	19 5/8" (498 mm)
PRODUCT	MIN.	MAX.
Length	2 1/2" (63 mm)	10 5/8" (270 mm)
Width	1 1/2" (38 mm)	10" (254 mm)
Depth	3/4" (19 mm)	5" (127 mm)

OPERATING REQUIREMENTS

ELECTRICAL:

460 VAC ±5%, 3-Phase with earth ground (PE), 50/60 Hz standard
230 VAC ±5%, 3-Phase with earth ground (PE), 50/60 Hz available
380-420 VAC, 3-Phase Wye with Neutral and PE, 50/60 Hz available

NORMAL POWER CONSUMPTION: 6.5 kVA

SERVICE REQUIRED: 32 Amps @ 460 VAC

AIR: 0.35 cfm (10 L/min) @ 60 psi (4 bar)

STANDARD FEATURES

- 12" (305 mm) pitch
- Allen Bradley Panel View 300 micro LCD touch screen menu interface for quick command recognition and machine diagnostics
- Quick size change with digital size change adjusters
- Pneumatically-actuated infeed
- CE marked and manufactured to current EC standards
- Nordson glue jet system
- Stainless steel frame
- Inclined carton hopper
- Reciprocating carton feeder
- Product infeed conveyor
- Cantilevered design
- Driven outfeed belts

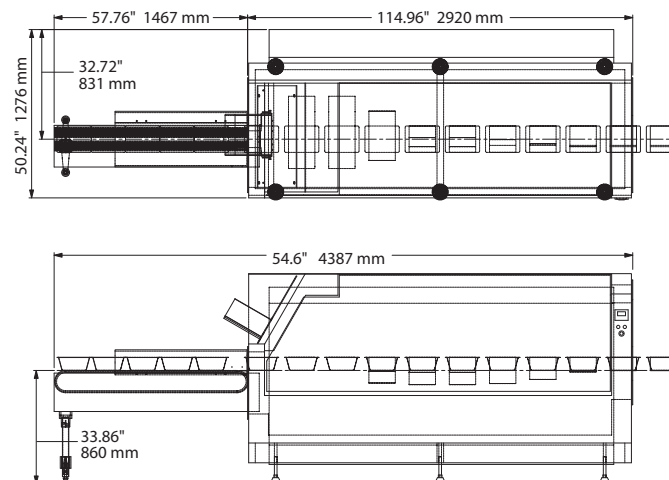
OPTIONAL FEATURES

- Washdown sanitation specifications
- Powered carton hopper
- 15" pitch version
- Lock closure
- Opposite-hand version
- Alternative product infeed options
- Central lubrication system

CONSTRUCTION

Stainless steel construction with clear polycarbonate guards. Chains, pulleys and sprockets are nickel-plated.

Approximate shipping weight: 3300 lb (1500 kg)



KW

KLIKLOK • WOODMAN®

5224 Snapfinger Woods Drive
Decatur, GA 30035 USA
Tel +1-770-981-5200
Fax +1-770-987-7160
kwmarketing@kliklokwoodman.com
www.kliklokwoodman.com

Western Drive, Hengrove Park Estate
Whitchurch, Bristol, BS14 0AY, UK
Tel +44-1275-836131
Fax +44-1275-891754
sales@kliklok-int.com
www.kliklok-int.com