

SUPER PATTY MACHINE



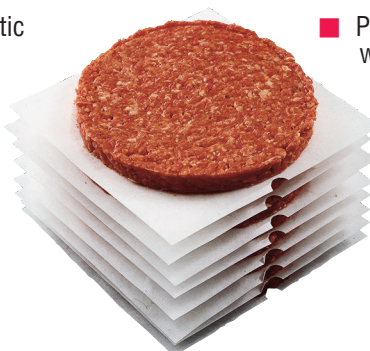
Super Patty Machine with Programmable Counter and Conveyor



HOLLYMATIC SUPER... THE PATTY MACHINE THAT STARTED IT ALL.

There's a good reason why the Hollymatic Super is found in more restaurants, supermarkets, drive-ins, small locker plants, and institutions than any other patty machine. The Super is an industry favorite for producing high quality patties. **It's the most popular patty machine ever built.**

- Forms patties up to 8 oz. in weight, from 3/16" to 3/4" thick.



- Produce up to 2,100 patties per hour with reliable portion control.
- Automatic side notch paper interleaving.
- Safety Interlocked.
- Mold plate changes, simple and fast.
- Fast, easy clean-up with one tool disassembly. For more information contact Hollymatic or your local authorized Hollymatic Dealer today!



Hollymatic®

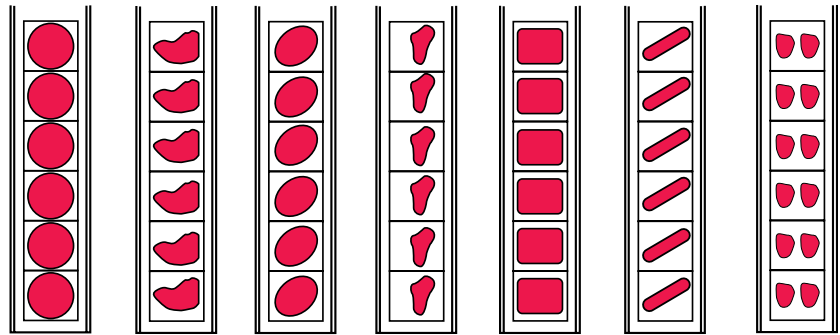
YOUR PRICE VALUE LEADER™

HOLLYMATIC SUPER MOLDS... A WIDE VARIETY TO CHOOSE FROM*



Optional 2' neoprene or wire mesh take away conveyor provides for continuous production. Equipped with a built-in digital programmable counter for accurate patty stacking.

Model 300 Conveyor



Beefburgers Chopetes Oval Chicken Legs Steaks Sausages Multi-Hole Nuggets

*Custom Shapes Available Upon Request



SIDE NOTCH AUTOMATIC PAPER FEED SYSTEM

Automatic paper interleaving system increases production capability and eliminates paper chips. Paper can be added to the dispensing mechanism without the need to stop the machine.

ALWAYS USE GENUINE HOLLYMATIC PATTY PAPER

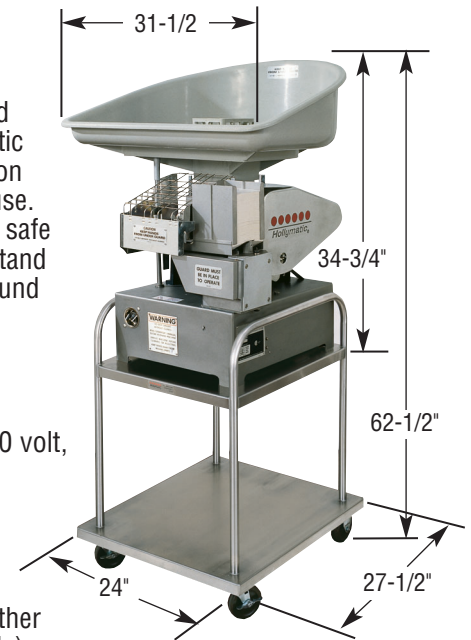


STAINLESS STEEL STAND

A rugged, sturdy stand was created especially for use with the Hollymatic Super. All stainless steel construction gives you lightweight yet durable use. Built to keep your Super at proper, safe operating height. The easy-move stand gives you the maximum in roll-around convenience and flexibility.

SPECIFICATIONS

- Motor: 3/4 H.P 115/230 volt, 60Hz., 1 Ph. 12/6 A 115/220 volt, 50 Hz., 1 Ph. 12/6 A (3 Phase and other options available)
- Feed Tray: Removable and safety interlocked w/guard.
- Paper Feed: 5-1/2" (standard) automatic side notch system. Optional 4-1/2", and 5" available.
- Speed: 2,100 or 1,800 portions per hour.
- Portion Size: Standard up to 8 ounces per portion.
- Mold Plate: Standard 3/16" to 3/4" thick. 5-1/8" Maximum diameter with paper.
- Compressors: 5 Oz. or 8 Oz., depending on portion size.
- Machine Stand: Stainless steel with casters, custom built for the Hollymatic Super.
- Conveyor: Optional 2' neoprene or wire mesh conveyor with digital programmable counter/stacker. Net weight of Super Conveyor: 31 pounds.
- Supplies: To maintain your Hollymatic Super in top condition, contact your local Authorized Dealer for genuine Hollymatic parts, supplies and quality Hollymatic patty paper.
- Net Weight: 330 pounds, including stand and mold plate.



HOLLYMATIC WARRANTY
Six (6) months from date of purchase. Refer to warranty certificate for terms and conditions

5045M
© Copyright Hollymatic Corporation
All Rights Reserved



YOUR PRICE VALUE LEADER™

Hollymatic Corporation,
600 E. Plainfield Road, Countryside, Illinois 60525
708/579-3700 Fax: 708/579-1057
See Something New –
Visit Our Web Site: www.hollymatic.com
E-mail: hollyinfo@hollymatic.com