



MODEL WHP-200 4,000 lb. Capacity
HEAVY DUTY HIGH PROFILE TURNTABLE
(WITH NO-THREAD[®] POWERED PRE-STRETCH CARRIAGE)

**MODEL WHP-200 MACHINE SPECIFICATIONS
SEMI AUTOMATIC HEAVY DUTY HIGH PROFILE TURNTABLE**

CAPACITIES

PRODUCTION

- Up to 50 loads per hour, based on load size and configuration

LOAD WEIGHT

- 4,000 lbs.

APPROX SHIPPING WEIGHT

- 1,523 lbs.

LOAD SIZE

- Maximum 56"W x 56"L x 76"H

ELECTRICAL REQUIREMENTS

- 120V/1/60 15A

MACHINE DIMENSIONS *

- 51"W x 106½"L x 93¾"H

* Machine height can exceed by up to 8" when carriage in upmost position.

FEATURES

CONTROLS

- Allen Bradley Micrologix 1200 PLC
- 24V control system
- Current overload protection
- Control cabinet incorporated in tower
- Autoheight sensing photoeye with on/off switch
- Power on/off switch and indicator light
- Start/stop push button
- Large emergency stop (push pull type)
- Manual carriage up/down switch
- Variable table speed (12 RPM)
- Separate up and down carriage speeds
- Separate top and bottom wrap selectors (0-9)
- Reinforced wrap/manual rotation control
- Positive turntable alignment
- Top cover pause switch (Splash-proof Program)
- Spiral up, spiral up/down
- Film force to load control

FILM DELIVERY SYSTEM

- 20" NO-THREAD[®] Powered Pre-Stretch Carriage
- 1/2 HP AC motor with Allen Bradley variable frequency drive
- 50-300% prestretch ratio (preset to customer spec, Std 200%)
- Electronic film tension control with analog sensor
- Film roping bar
- Lexan roller cover
- Film force release for easy pull at start and end of cycle

FILM CARRIAGE DRIVE

- 1/2 HP AC motor with Allen Bradley variable frequency drive
- Two #50 chain carriage lifts for safety
- Dual ½" CRS ways with UHMW-PE carriage glides

TURNTABLE

- 52" X 52" X 3/8" formed steel octagonal table
- (4) 6" x 3" phenolic support casters c/w side thrust bearings (2,000 lbs. load rating each)
- 13-1/2" table height

TURNTABLE DRIVE

- Max. 12 RPM variable speed
- 1/2 HP AC motor with Allen Bradley variable frequency drive
- #50 ANSI heavy duty chain drive
- Electronic soft start/stop
- Positive turntable alignment controlled by proximity sensor

STRUCTURE

- Formed steel tower consisting of 11 gauge front section and 14 gauge back cabinet section with lockable door
- Forklift Portable base design (from both ends)
- Heavy duty structural steel construction

TECHNICAL INFORMATION

- The machine is provided with a manual including electro/mechanical schematics and drawings
- Trouble shooting guide
- Installation instructions

WARRANTY

- All Wulftec's semi-automatic machines come with a three year warranty.
- All Wulftec prestretch compound rollers have a lifetime warranty. (see Chapter 9 for complete warranty)



LR105922



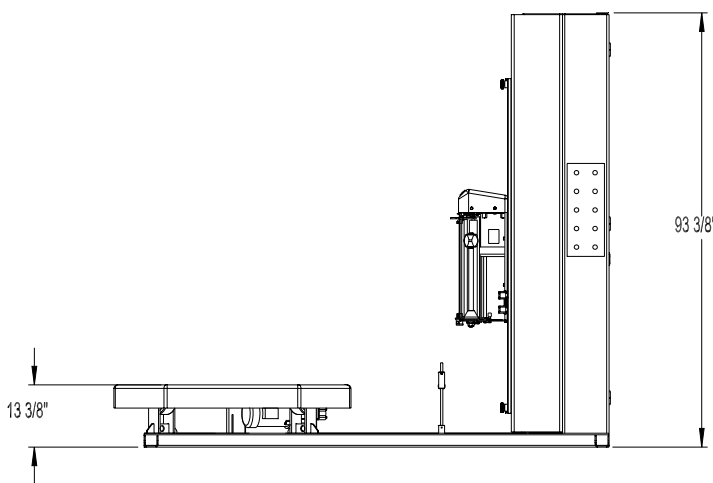
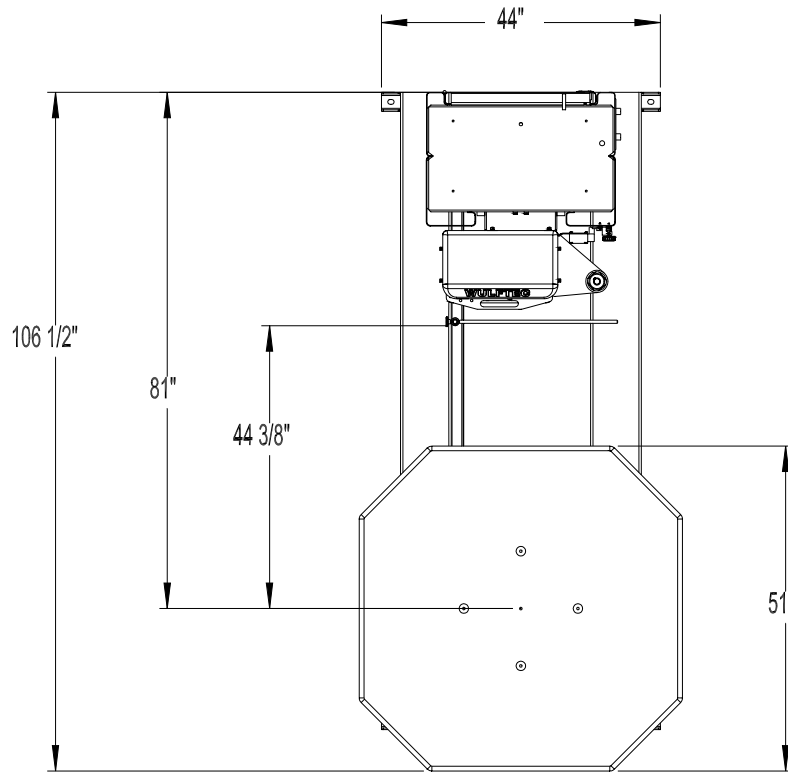
209 Wulftec
Ayer's Cliff, Quebec, Canada
J0B 1C0

Tel.: (819) 838-4232
Fax: (819) 838-5539
Toll free (877) WULFTEC
(877) 985-3832

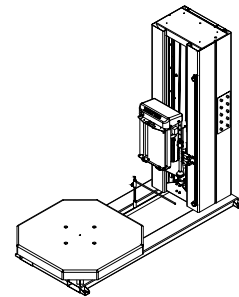
E Mail: wulftec@wulftec.com
Web Site:
<http://www.wulftec.com>

DISTRIBUTED BY:


Note: All machine specifications and pricing are subject to change without prior notice.



Hinged towers are optional on 76" (standard) wrap height.



5/4/04

LR105922
 **MODEL WHP-200 4,000 lb. Capacity**
HEAVY DUTY HIGH PROFILE TURNTABLE
(WITH NO-THREAD[®] POWERED PRE-STRETCH CARRIAGE)