

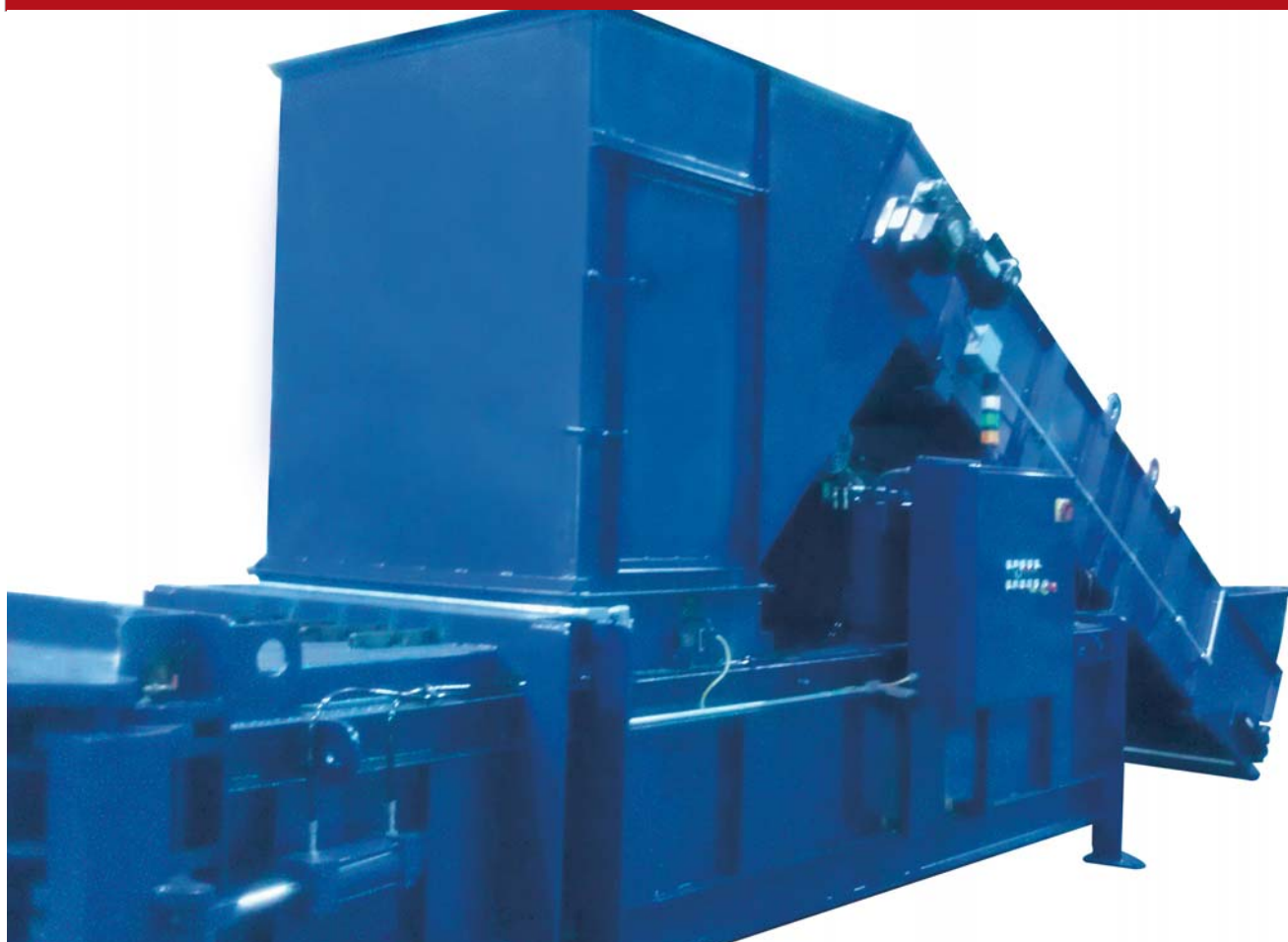
PW3560

PREDATOR SERIES



KEY FEATURES

<u>HORSEPOWER:</u>	20 HP
<u>RAM PENETRATION FOR DISCHARGE:</u>	3/4" SHORT OF THE EJECT DOOR
<u>MAXIMUM CYLINDER BURST:</u>	12,000# 4:1 SAFETY FACTOR
<u>CYCLE TIME IN SECONDS:</u>	29.4 / 17.4 SHORT STROKE
<u>MAXIMUM WEIGHT:</u>	23,000#



AMERICAN BALER COMPANY

PH: 419.483.5790

BELLEVUE, OHIO

EMAIL: sales@americanbaler.com WEB: www.americanbaler.com



SPECIFICATIONS
PW3560
CLOSED DOOR BALER

Revised 5/11
Spec. #460

SPECIFICATIONS

	PW3560
Feed Opening	35" X 57"
Charge Box Volume	50.5 cf
Horsepower	20
Displacement (Dry)	10,000 cf
Main Cylinder	8"
Compressing Force	150,800 lbs
Ram Face Pressure	88.1 PSI
Bale Size	30"w x 45" h x 60"l

TECHNICAL DATA:

Compressing Cylinder:	8" I.D. Bore x 5" Rod x 93" Stroke	Oil Cooler	Optional - Air-to-Oil
Maximum Cylinder Burst:	12,000# 4:1 Safety Factor	Oil Capacity:	170 Gal.
Type of Mount:	Trunnion Type	Command Center:	Allen Bradley Micrologix 1200
Hydraulic Door Cylinder:	4" Bore x 8" stroke		
Motor:	T.E.F.C. 460V/3 Ph/60 Hertz Across the line starting standard	Filtration:	Combination of cleanable tank screens and magnets and 10 micron absolute filter. Clogged filter indicator warns of need to replace filter.

CONSTRUCTION: Fabricated from heavy structural steel members, gusseted and braced as required. Fitted in jigs and fixtures for proper alignment.

LINERS: Hi-Low floor is made of abrasive resistant Hardox 500 material.

OTHER FEATURES: Positive Material Stops: 5 gravity mounted on top of compressing chamber
Shear Knife: T1 Steel – Multiple Bolt-In Blades creating a serrated edge - replaceable

* Bale weights and tonnage results can be affected by variables, such as moisture content, shape, size, thickness and mass of the material to be baled.

** Normal displacement times include 1.5 seconds for valve shifting and 1.5 seconds for time delays to allow material to adequately disperse in baling chamber. In most applications a 1.5 second delay will allow material to adequately disperse in baling chamber will be required.

*** Production does not take into account time for manual tie operation.

Built to all current ANSI and OSHA standards. 24-hour telephone hotline for service and technical support.