



Item No: _____

Somat Model : SPC-60S

Technical Specs:



DESCRIPTION:

Standard SOMAT® Model SPC-60S close-coupled pulper and Hydra-Extractor®. The pulper is all stainless steel with a horizontal drive, water flushed feed tray and internal valve package. The extractor is all stainless steel with a swing-away mounting for easy access to the water return pump. The Som-A-Trol® control panel is pre-wired and contains the water level control. A push button station is also included.

Benefits:

- As much as 8 to 1 (87.5%) volume reduction
- Reduced labor costs
- Better sanitation
- Water conservation
- Improved operator morale
- Reduced silverware loss
- Processes tough plastics, plus a wide variety of waste

Operation: Foodservice waste enters the pulping tank via the feed tray where it is mixed with water, forming a slurry of 5% solids and 95% water. The slurry is pumped to the Hydra-Extractor®, where the water is removed, resulting in a greatly reduced volume. The resulting semi-dry pulp is discharged into a haul-away container. The extracted water is recovered and returned to the pulper for re-use.

Pulper: 25 1/2" diameter, 35.5" high, polished stainless steel tank with water flushed tray, hinged lid and associated proximity switch. Horizontally mounted pulping and pumping system, integrated with one 6 HP TEFC motor that is rubber isolated from the frame, shell and tray. Stainless steel shrouds totally enclose the drive system and water manifolds. Adjustable legs provide 6" floor-to-frame clearance. All customer connections are external.

Components include: 304 stainless steel pulper tank, investment cast 17-4 stainless steel security ring and rotating blade, three replaceable stationary blades on the security ring, stainless steel impeller with replaceable stainless steel pumping vanes. The one-piece rotating blade is hardened to 46 Rockwell C and can be easily re-sharpened.

Hydra-Extractor®: Rigid stainless steel weldment with polished exterior, stainless steel legs, head assembly with 2 HP TEFC drive motor mounted to a 20:1 gear reducer, 17" long stainless steel discharge chute with hinged lid and proximity switch, 3 HP TEFC re-circulation pump and a chemical additive pump. The water extraction components include: a 6" diameter stainless steel screw with nylon brush edge, matching reinforced stainless steel screen and a stainless steel plug cutter.

Valve Package: Pre-piped bronze valves mounted on manifolds completely enclosed in stainless steel shrouds.

Som-A-Trol® (Electrical Control Panel): Wall mounted, UL approved, NEMA 4 stainless steel enclosure. Included are all necessary power, control and water level components, pre-wired to a terminal strip. A push button station is included with the panel or mounted on the unit.

Options Available:

- Trough Connection
- Slurry Siphon Break
- Prison Package
- Second Year Warranty

Electrical Characteristics: 208/230/460 volt, 3 phase, 60 Hz.

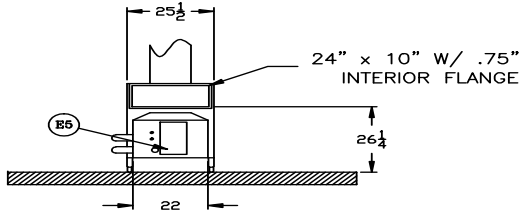
Capacity: 1000 pounds per hour of foodservice waste mix, consisting of: food scraps, plastic flatware, paper, milk cartons, Styrofoam, aluminum foil, cardboard, polyethylene bags and all types of plastic containers and packaging.

Finish: All exterior surfaces are polished stainless steel.

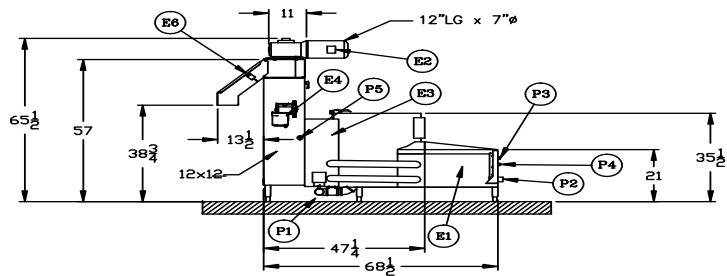
Somat Company—Division of ITW Food Equipment Group LLC
165 Independence Ct., Lancaster, PA 17601 USA
Phone: 717-397-5100 / 800-237-6628 Fax: 717-291-0877



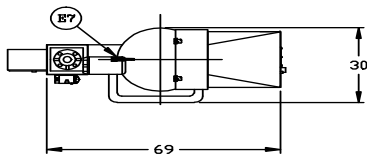
SPC-60s Close Coupled Pulping System HT Specs / Tray Options



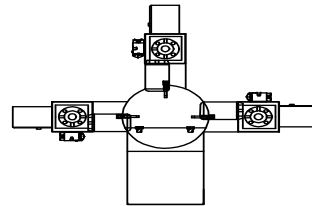
SPC-60S-HT W/TRAY ADAPTER
FRONT VIEW



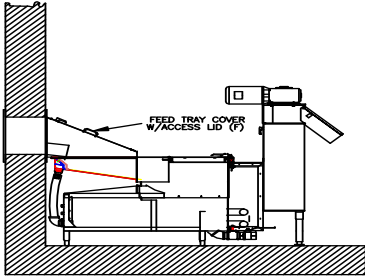
SPC-60S-HT W/TRAY ADAPTER
ELEVATION VIEW



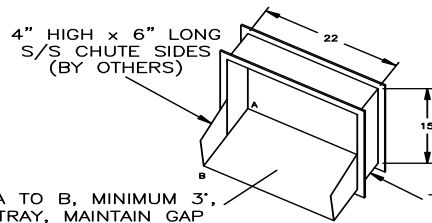
SPC-60S-HT W/TRAY ADAPTER
PLAN VIEW



OPTIONAL PULPER/EXTRACTOR
LAYOUT CONFIGURATIONS



OPTIONAL TRAY HOOD
AND PASS THRU WINDOW



4" HIGH x 6" LONG
S/S CHUTE SIDES
(BY OTHERS)

ANGLED DOWN A TO B, MINIMUM 3",
INTO PULPER TRAY, MAINTAIN GAP
BETWEEN CHUTE AND PULPER TRAY

TO S/S FRAMING AND TRIM
BE INSTALLED INTO WINDOW
OPENING BY OTHERS

TYPICAL PASS THRU WINDOW DETAIL

Utility Connections

E1- Pulper drive motor	E6- Chute limit switch	P1- Drain valve outlet (MOV)
E2- Extractor drive motor	E7- Pulper limit switch	P2- Return water outlet
E3- Return drive motor		P3- Fresh water inlet
E4- Chemical additive pump		P4- Fresh hot water inlet
E5- Junction enclosure		P5- Overflow outlet

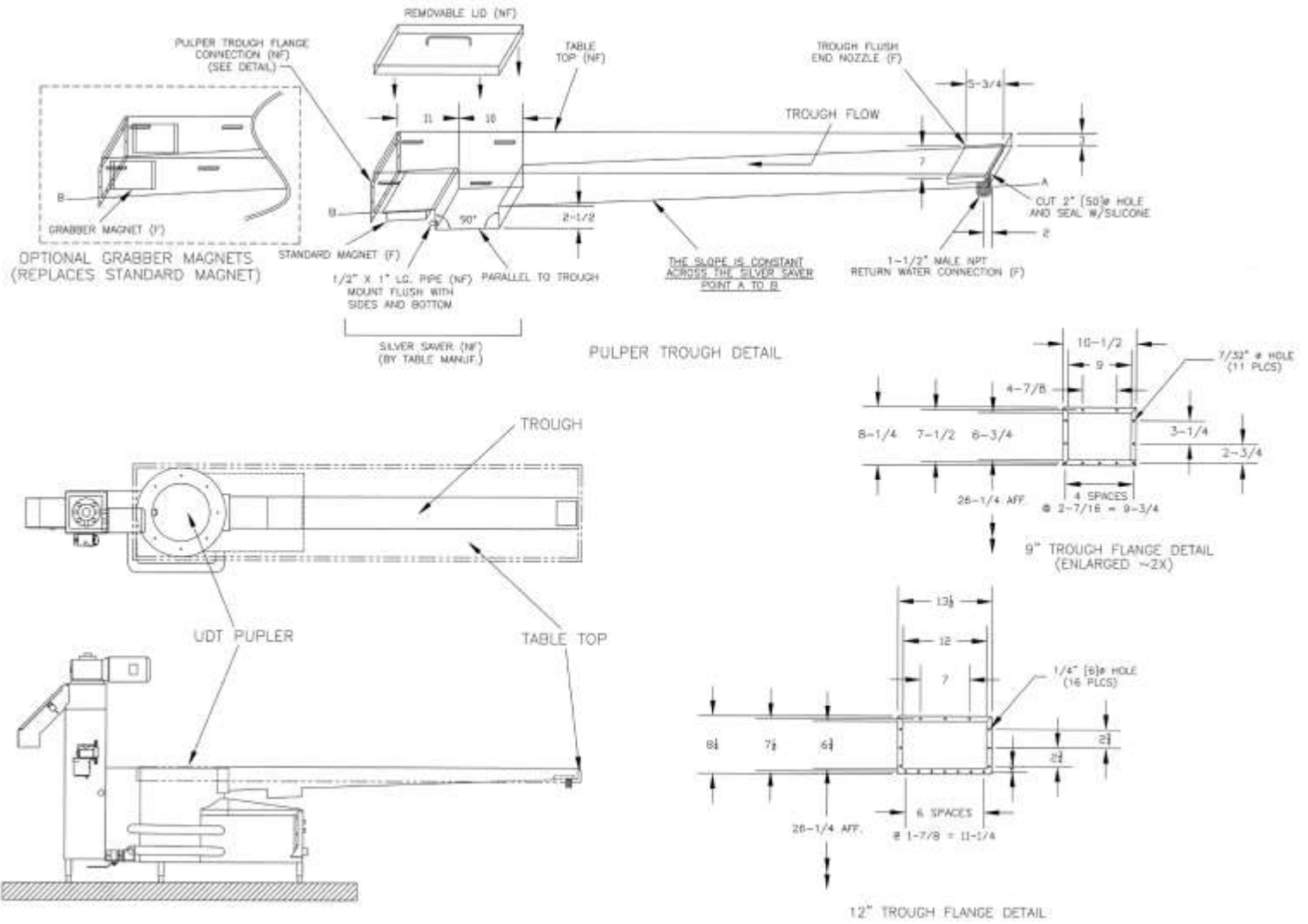
Dimensions

Total Height: 65.5" (1664mm)	Equipment weight: 775lbs. (352kg)
Tank Height: 35.5" (902mm)	Operating weight: 890lbs. (405kg)
Length: 83.5" (2121mm)	Crated weight: 1006lbs. (456kg)
Width: 30" (762mm)	Crated volume: 162cu. ft. (5.7 cu. Meters)



SPC-60S Close Coupled Pulping System

UDT Specs / Trough Options



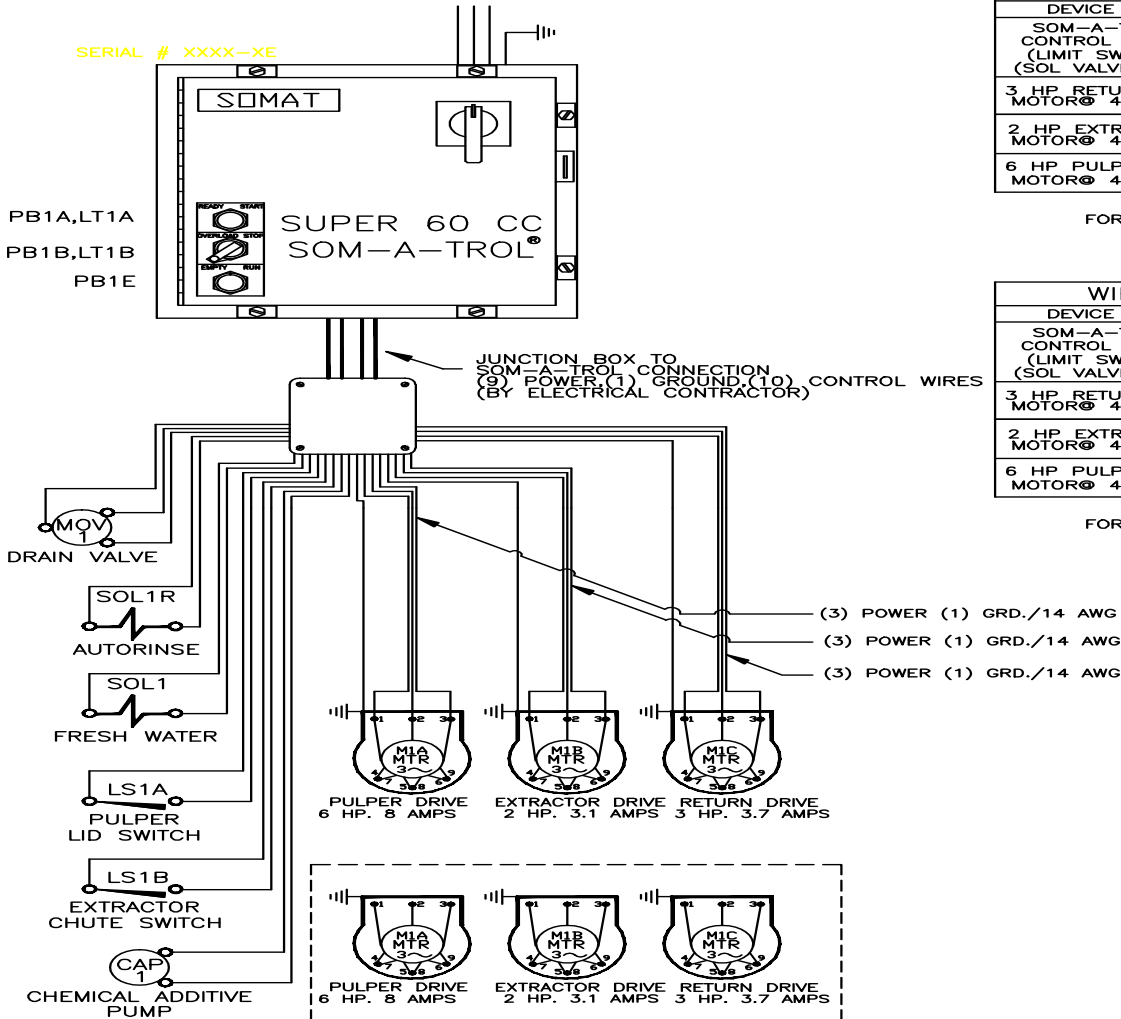
Dimensions

Total Height: 65.5" (1664mm)	Equipment weight: 775lbs. (352kg)
Tank Height: 33.75" (858mm)	Operating weight: 890lbs. (405kg)
Length: 83.5" (2121mm)	Crated weight: 1006lbs. (456kg)
Width: 30" (762mm)	Crated volume: 162cu. ft. (5.7 cu. Meters)



SPC-60S Close Coupled Pulping System Utility Specifications

WIRING DIAGRAM CUSTOMER POWER SUPPLY (BY ELECTRICAL CONTRACTOR) 460V-3Ø-60Hz-20AMPS



DEVICE	WIRE SIZE	TYPE
SOM-A-TROL CONTROL LOGIC (LIMIT SWITCH) (SOL VALVE,ETC.)	18 AWG	MTW-105°C
3 HP RETURN PUMP MOTOR@ 460/480V	14 AWG	MTW-105°C
2 HP EXTRTR DRIVE MOTOR@ 460/480V	14 AWG	MTW-105°C
6 HP PULPER DRIVE MOTOR@ 460/480V	14 AWG	MTW-105°C

USE NEXT SIZE AWG FOR RUNS OVER 150 FEET (46 METERS)

DEVICE	WIRE SIZE	TYPE
SOM-A-TROL CONTROL LOGIC (LIMIT SWITCH) (SOL VALVE,ETC.)	18 AWG	MTW-105°C
3 HP RETURN PUMP MOTOR@ 460/480V	14 AWG	MTW-105°C
2 HP EXTRTR DRIVE MOTOR@ 460/480V	14 AWG	MTW-105°C
6 HP PULPER DRIVE MOTOR@ 460/480V	14 AWG	MTW-105°C

USE NEXT SIZE AWG FOR RUNS OVER 150 FEET (46 METERS)

Other Utility Requirements

Fresh water: 12 gpm @ 30 psig, 1/2" NPT (approximate usage 60 -120gph).

Drain: 3" minimum floor sink, with stainless steel removable basket recommended.