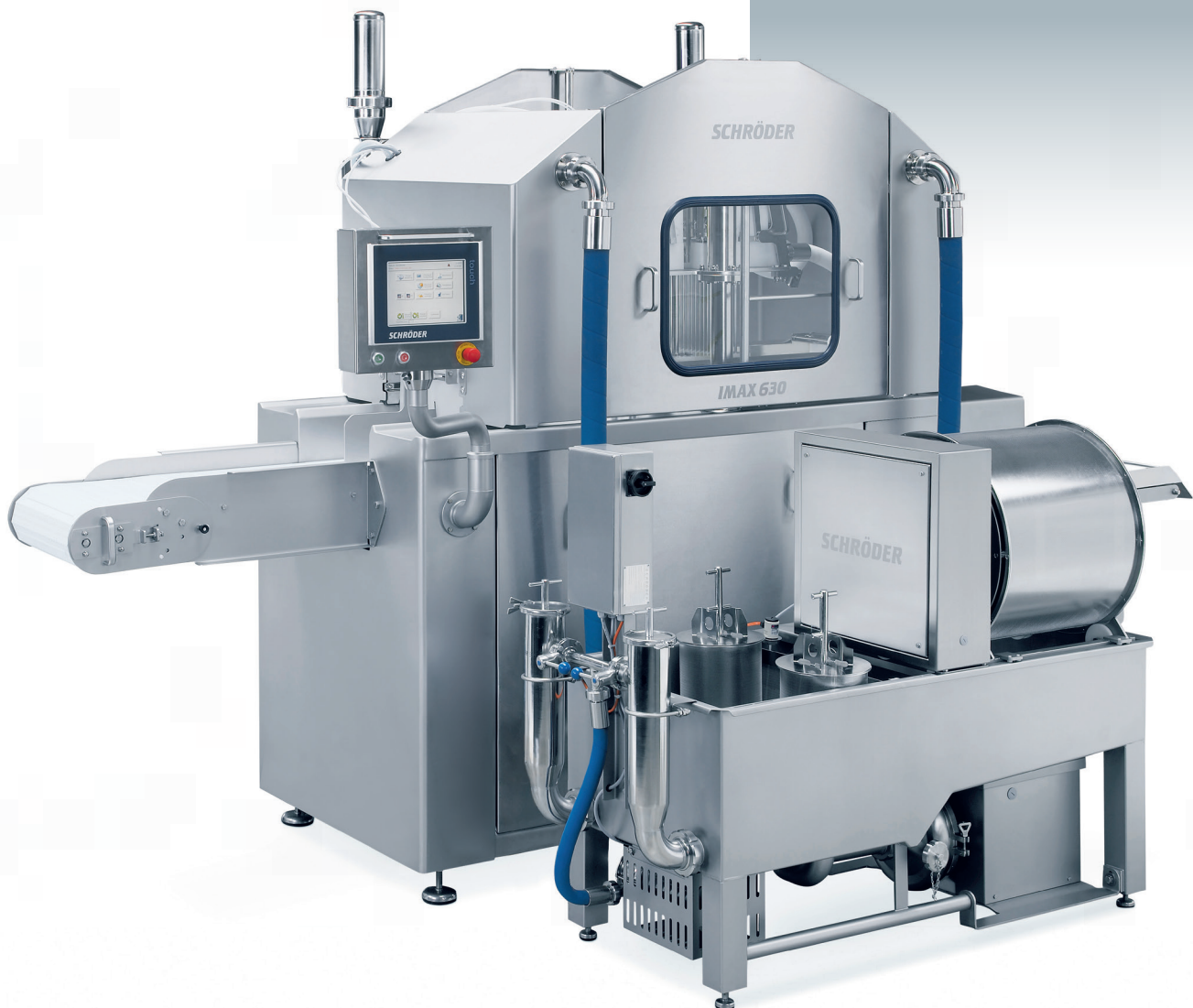


IMAX

Injection technology
[Belt transportation]



ANOTHER INNOVATION FROM

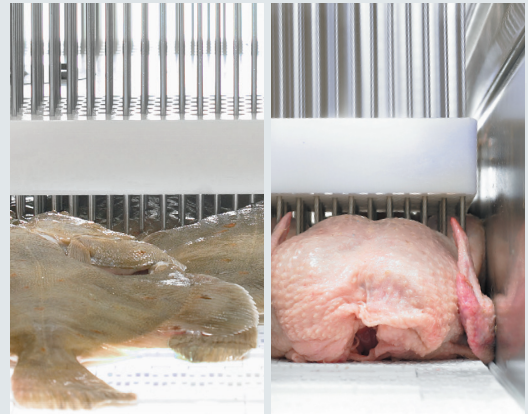
Wolf-tec, inc. **POLAR**
TECHNOLOGY

SCHRÖDER
THE SAFE SIDE OF FOOD.
THE SAFE SIDE OF FOOD.

IMAX 430 / 630 / 930

Belt injector

The processing principle of **IMAX technology** is based on classic injection curing methods using hollow needles. The brine or curing liquid is conveyed directly into the product through a system of pumps and pipes. Along with boneless products, bone-in meat, poultry and fish can also be injected.



Touch Panel Control STP 104

Straightforward operation, ergonomically designed.

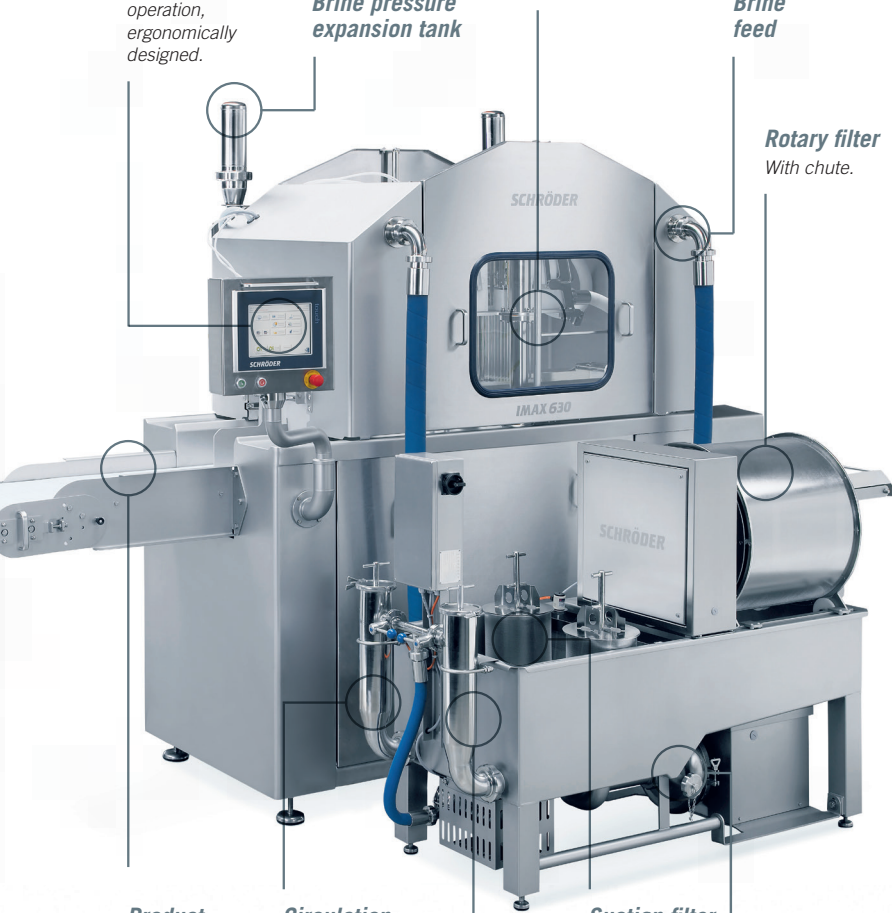
Brine pressure expansion tank

Needle register

Easily visible using inspection window.

Brine feed

Rotary filter With chute.



Product infeed

Manual or optionally via chute or fully automatic.

Circulation filter (UWF)

LB 300 brine basin

Also for connection to an optional heat exchanger pipe.

Suction filter

High-capacity stainless steel rotary pump.

Technical Data

Support width	430/630/920 mm
Max. injection area per hour	depends on the application – up to 230/340/500 m ²
Cycles per minute	15 to 45
Advance	depends on the application – 200/100/50 mm
Number of needles	depends on the application
Pressure range	0,5 – 4,5 bar
Connection values	15,6 kW / 15,6 kW / 26,4 kW
Machine length approx.	approx. 3400 mm, with LB 300 brine basin, without infeed chute
Machine width	approx. 2250/2450/3300 mm, with LB 300 brine basin
Machine length	approx. 2600 mm
Loading height	approx. 1200/1200/1260 mm
Compressed air	min. 6 bar
Electrical connection	3 x 380 – 460 V, 50/60 Hz or 3 x 200 – 240 V, 50/60 Hz
Pump capacity	7,5 kW
Drive power	7,1 / 7,1 / 9,7 kW



Touch Panel STP 104

Recipe management, network-compatible

IMAX technology

Brine feed and register

The user-friendly touch panel control allows all process parameters relating to the product to be entered and injection recipes to be stored. There are numerous different injection modes available, such as one-way and two-way forced injection (controlled by a hold-down device), contact needle injection and “BEC” – Brine Exit Control – a freely-definable injection area. Whether single or double register: they can be adapted for the required result, according to product, brine properties and injection rate, and can therefore be optimally equipped. The design and layout of the brine feed on Schröder injectors is the result of comprehensive research in close collaboration with a university. From the pump and filter to the needle bore, pressure ratios, volume flow and hygienic aspects have been scrutinized, resulting in optimal compatibility of the individual elements.

Brine hose

Easy to dismantle for cleaning.

Compressed air connection

Suspension pressure continuously adjustable, pneumatically controlled.

Suspension block

For needle retraction when processing bone-in products.

Two screw connections

The entire suspension block is easy to fold down.



Needle register

Needle configuration can be optimally selected for the product.



Brine feed

High-quality brine feed which is easy to clean.



Needle removal tool

Easy and quick needle removal.

IMAX technology

System features

The **IMAX injectors** include diverse system features which have been consistently refined and enhanced based on decades of experience. They include, for example, mechanical and electrical product detection, conductivity measurements (indicates the salt content of the brine), brine level regulation, cleaning carriage or poultry guide rail.

Loading

The products can be fully automatically loaded by the injector for continual processes. For the poultry industry, a special portioner is available for the cut-up lines. The Z conveyor for automatic loading is coupled to the supply speed at the injector. This results in a uniform injection quality.

Filtering

The filtration of the return brine flow has up to four stages and can be optimally adapted to individual requirements. Rotary, circulation, suction and inline filters with a variety of different configurations for selection guarantee an optimal filtration result. The individual filter elements have a straightforward layout, are easy to access for the user, and simple to clean. For "heavy" brines, an anti-sedimentation unit is also available.

LB 300 – with a 300-liter capacity



Rotary filter
Can be optionally equipped with a scraper, chute or self-cleaning.

2 Suction filters
For continual operation.

Brine pump
Optional pump for air discharge.

Pump for circulation filter
Optional heat exchanger pipe which can alternatively be equipped with an anti-sedimentation filter.



Cut-up portioner
For loading trays.



Z conveyor
Automatic injector loading, supply speed adapted to the injector.



Fine filter
Efficient filtering of small particles, which can be cleaned alternately during production.

Distributed by:



20 Kieffer Lane, Kingston, NY 12401 USA
Telephone (845) 340-9727 • Fax (845) 340-9732
www.wolf-tec.com • sales@wolf-tec.com

