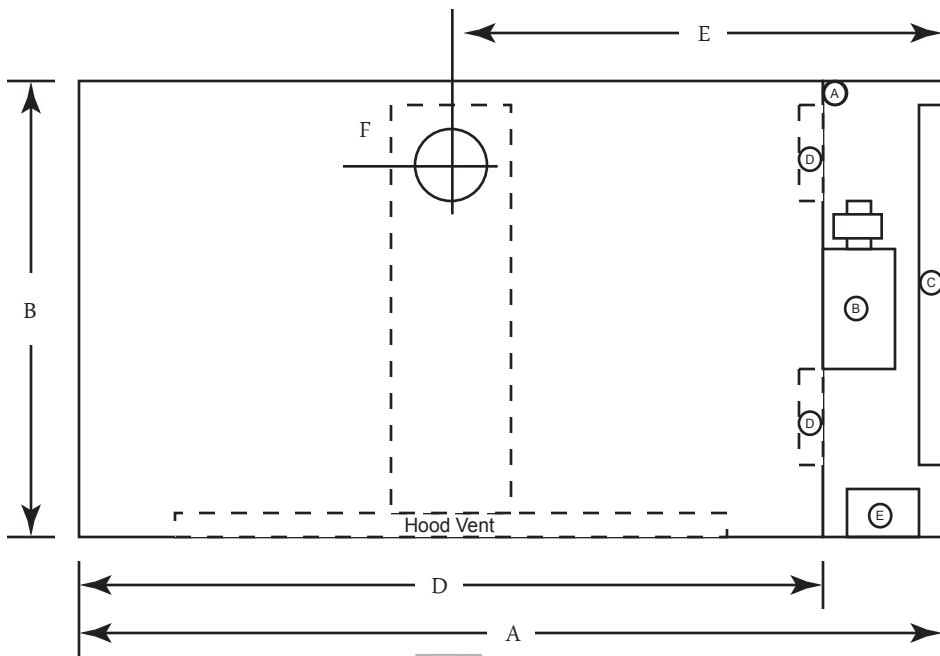
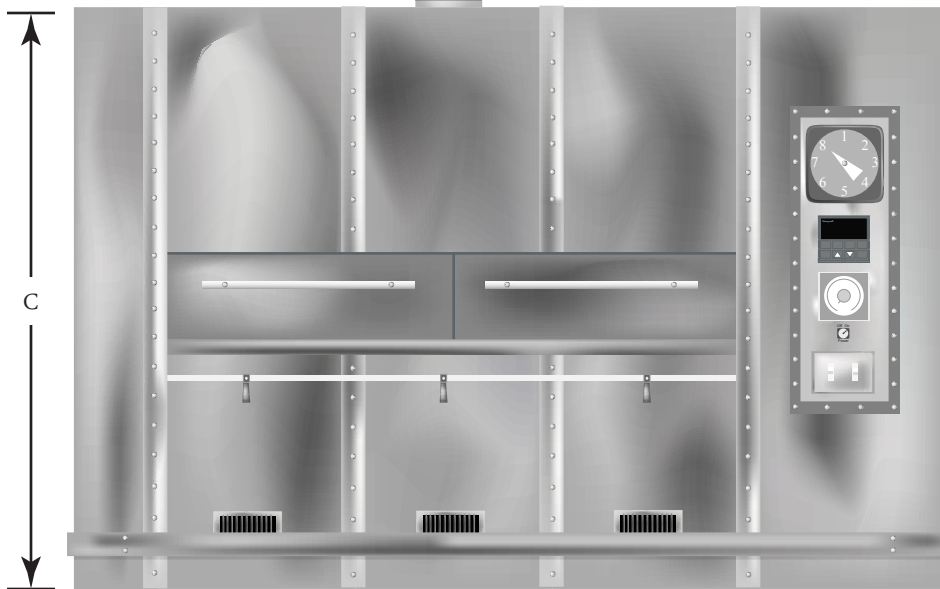


Wholesaler Oven



- (A) Gas connection - Approx. 30" above floor (6.0" IWC - Nat.) (10.0 IWC - LP)
 - (B) 1/3 HP 115V. 1 PH. Motor
 - (C) Sliding doors for access to mechanism
 - (D) Cleanout door - Approx 7" above floor
 - (E) 110 V. 1 PH. Approx 10 Amps. Connection (30" above floor)
- Connections from ceiling should be stubbed in above oven height

Consult Factory for dimensions of Indirect Fired Ovens



Shipping Weight

30BP	11,000 lbs.
40BP	12,500 lbs.
48BP	14,700 lbs.
56BP	17,500 lbs.
60BP	18,500 lbs.
70BP	20,000 lbs.

Model Indicates

of Shelves in Oven
Depth of Shelf
Width of Shelf

Model	Bun Pan	A	B	C	D	E	F	Full Size	Gas Supply	BTU Input
6-26 x 92	30	11'-1"	8'-4"	8'-0"	9'-7"	5'-6"	1'-1"	10"	1' 1/4"	540,000
8-26 x 92	40	11'-1"	9'-8"	9'-2"	9'-7"	5'-6"	1'-1"	10"	1' 1/4"	540,000
8-26 x 110	48	12'-8"	9'-8"	9'-2"	11'-2"	6'-4"	1'-2"	12"	1' 1/4"	640,000
8-26 x 128	56	14'-2"	9'-8"	9'-2"	12'-8"	6'-4"	1'-2"	12"	1' 1/4"	640,000
10-26 x 110	60	12'-8"	11'-2"	10'-4"	11'-2"	6'-4"	1'-3"	12"	1' 1/4"	640,000
10-26 x 128	70	14'-2"	11'-2"	10'-4"	12'-8"	6'-4"	1'-3"	12"	1' 1/4"	640,000

