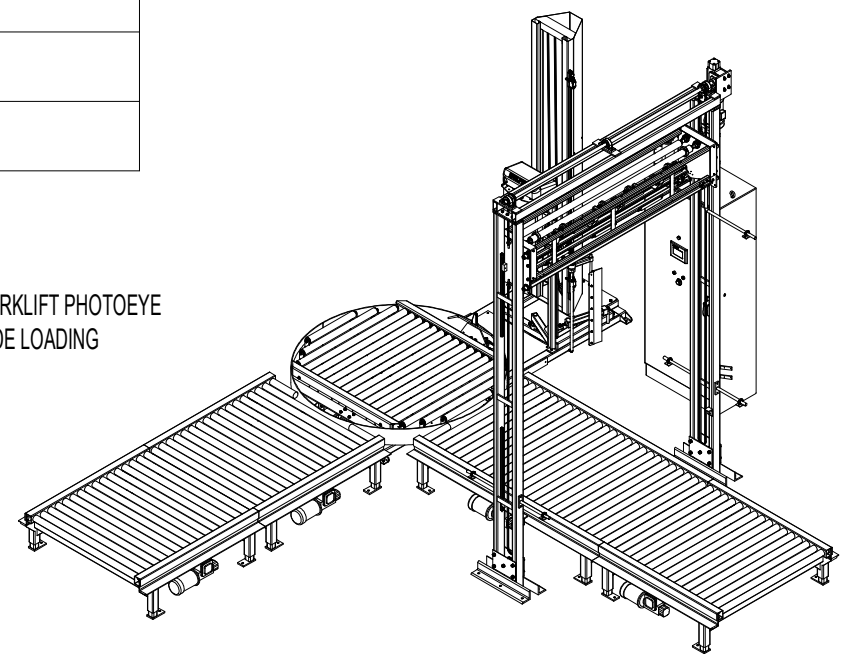
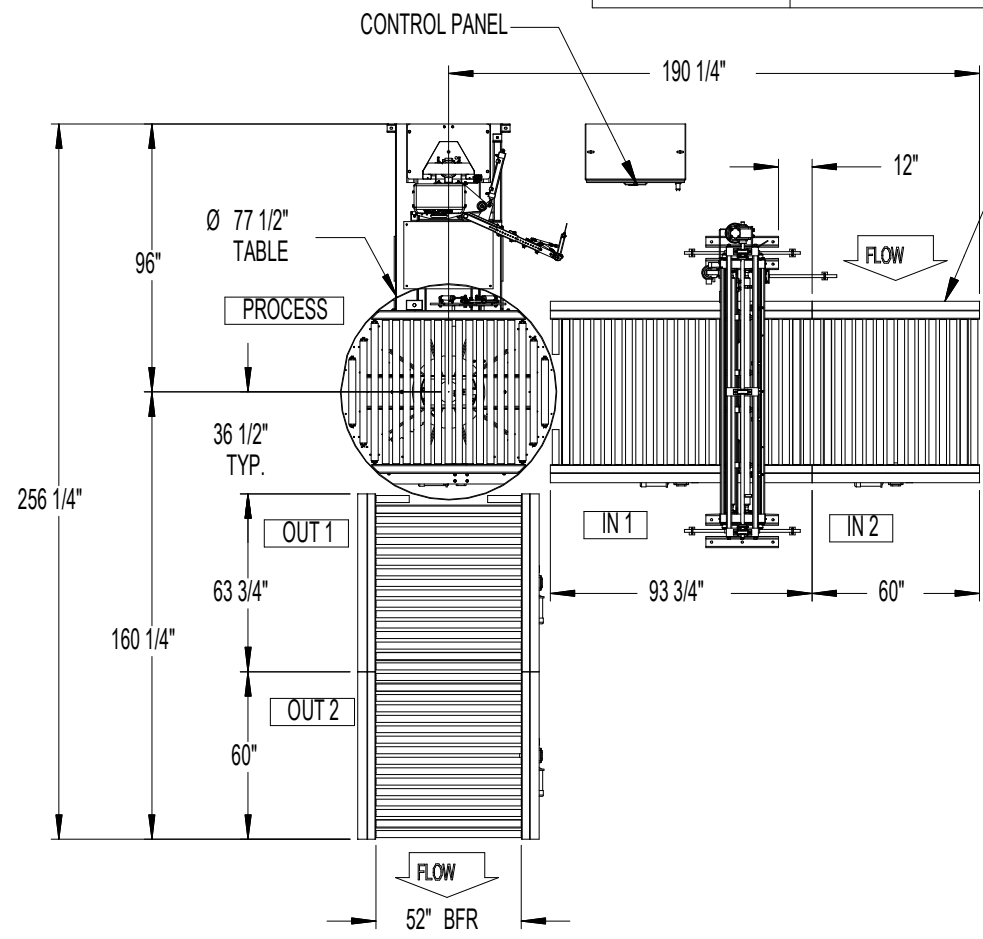


THE INFORMATION CONTAINED IN THIS DRAWING IS THE SOLE PROPERTY OF WULFTEC INTERNATIONAL. ANY REPRODUCTION IN PART OR WHOLE WITHOUT THE WRITTEN PERMISSION OF WULFTEC INTERNATIONAL IS PROHIBITED.

APPROVED BY (signature)	
PRINT NAME IN BLOCK LETTERS	
DATE (M/D/Y)	



- POWER SUPPLY 460VAC/3Ph/60hZ
- ALLEN BRADLEY MICROLOGIX 1200 PLC
- ALLEN BRADLEY POWER FLEX 4 @ 230VAC
- CARRIAGE SIZE NTPS 30"-RH @ 200 PRESTRETCH RATIO
- 104" MAX WRAP HEIGHT
- 172" MAX MACHINE HEIGHT
- 30 FPM CONVEYOR SPEED
- 18" CONVEYOR PASS HEIGHT
- 52" BFR CONVEYORS
- WULFTEC STD COLOR RED & BLUE
- TEMPERATURE RANGE 5°F TO 104°F
- REQUIRED AIR SUPPLY 3CFM@80PSI (100 CLEAN & DRY)
- WRAP SPECIFICATION 2" FROM TOP OF ROLLER

Revision Number	Revision Date	Done By	Revision Description
1	12/7/2004	pierrem	CHANGED ENCLOSURE LOCATION

UNLESS OTHERWISE SPECIFIED DIMENSIONS ARE IN INCHES TOLERANCES ARE: FRACTIONS DECIMALS ANGLES ±1/32 .XX±.01 ±1° XXX±.005	CAD GENERATED DRAWING. DO NOT MANUALLY UPDATE		WULFTEC INTERNATIONAL	
	APPROVALS	DATE	SO19171-1 ADM ANIMAL HEALTH NUTRITION	
	DRAWN pierrem CHECKED	2004/12/01		
RESP ENG		Wulftec#WCA00150-00057		
APPROX WEIGHT (LBS)	12963.8	SIZE A	Cad File: SO19171-1_ADM_ANIMAL_HEALTH_NUTRITION	REV 1
DO NOT SCALE DRAWING		Scale 1:70	SHEET 1 OF 1	